

Badge Findings



Plastic & Acrylic Bonding Solution

PBS1
1 quart can
(fast drying, clear liquid solvent for welding plastic or acrylic)

NOTE:
PBS1 Available only on Will Call, Truck or Mail Orders.
Mail Orders F.O.B. Sioux Falls, SD, Jacksonville, FL, Santa Fe Springs, CA only.

NOTE:
PBS1 cannot be shipped by air.

Part No.	Description	Case Qty.	Part No.	Description	Case Qty.
JD130D	Self Adhesive Bulldog Clip	100	JD152D	Single Post Pin	100
JD134D	Bulldog Clip with Plastic Strap	100	JD170D	Clear Plastic Pocket Badge	100
JD135D	Vinyl Backed Bulldog Clip	100	JD201D	Convention Badge with Pin	100
JD136D	Self Adhesive Bulldog with Pin	100	JD204D	Convention Badge with Bulldog Clip	100
JD138D	Badge Adapter with Clip	100	JD208D	Convention Badge with Holes	100
JD140D	Double Post Bar Pin	100	JD210D	1/4" x 5" Leather Strap	100
JD150D	Butterfly Clutch	100	JD220D	6" Clear Plastic Strap	100

Badge Findings



Part No.	Description	Case Qty.
JD101D	1-1/2" Plastic Bar Pin	100
JD102D	1-1/2" Self Adhesive Plastic Bar Pin	100
JD105D	1-1/2" Metal Bar Pin	100
JD110D	1-1/2" Top Opening Vinyl Backed Bar Pin	100
JD111D	1-1/2" Side Opening Vinyl Backed Bar Pin	100
JD120D	1-1/2" Top Opening Self Adhesive Bar Pin	100
JD121D	1-1/2" Side Opening Self Adhesive Bar Pin	100



Magnetic Badge Attachments



Eliminate holes in clothing. All Magnetic Badge Attachments are self-adhesive.



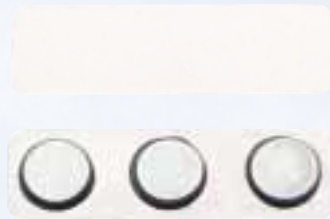
MP305 - Set
Small Power Mag



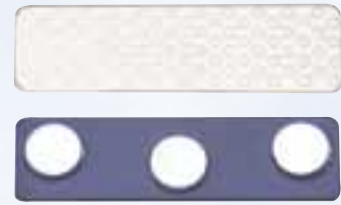
MP300 - Set
Magna Power



MP302 - Set
Large Power Mag - 2 Post



MP303 - Set
Large Power Mag - 3 Post



MP323 - Set
Blue Plastic Covered - 3 Post



KH500 - Set



MP311 - Set
Small Plastic Covered



MP321 - Set
Large Plastic Covered

See page 79 for
Badge Blanks
and Frames.

Part No.	Size	Weight	Case Qty.
MP305	3/8 x 1-1/2	9 g	50
MP300	1/2 x 1-3/4	11 g	50
MP302	1/2 x 1-3/4	12 g	50
MP303	1/2 x 1-3/4	13 g	50
MP323	1/2 x 1-3/4	11 g	50
KH500	5/8 x 1-11/16	13 g	50
MP311	1/2 x 1-1/4	6 g	50
MP321	1/2 x 1-3/4	10 g	50